



Xeo 2
Wireless Loudspeaker

Everything is new Xeo 2

The basic principle of the Xeo 2 is simple: everything that is in the way is simply taken away. And at the same time, innovative audio technologies deliver remarkable sound quality.

The Xeo 2 is the perfect combination of effortless enjoyment and high-quality sound. It is Dynaudio's smallest wireless speaker system yet – without any compromise of the completely high-end audio sound. It is small, smart and unbelievably versatile. It makes speaker cables, external amps and bulky speaker cabinets superfluous. It is everything you need.

The Xeo 2 processes music streamed via Bluetooth or even high-resolution audio data through the optical digital input or by using the Dynaudio Connect transmitter.

Just set it up, start listening and be blown away by the Xeo 2. There is simply no other system on the market that makes it so easy to enjoy your music to its utmost potential.



Small, smart and very simple

We are mobile. No detours, no baggage. We want to have beautiful things around us that are intuitive to use, and that are truly excellent.

The Xeo 2 frees us from the annoying limitations of the past. Two compact speakers that can be controlled directly via remote control, touch-sensitive controls on top of the speakers, or Bluetooth, and fit in anywhere in the room.

Your favorite album on CD. A TV show on the television in the bedroom. Streaming service from your smartphone in the kitchen. Playing high-res files from your network player. The Xeo 2 plays all this and much more, effortlessly and in excellent quality, without the need for swapping cables or secondary systems. Installation is a piece of cake. Available in satin black or satin white, the compact speaker cabinets will fit in anywhere. A remote control is included, a wall-mount bracket and a desktop stand are available separately.

And the Xeo 2 is also the right way to go if you want to centralize your sound throughout the home – simply set up a multi-room network with the Dynaudio Hub or the Dynaudio Connect and you have transformed your entire space into a stage for complete, unsurpassed musical pleasure. You shall have music wherever you are.

Music is great. We want the full sound. Everywhere, all around.

The Xeo 2 receives music data directly from the source device. This can be a smartphone, a tablet or a PC, or the TV or a hi-fi component via the Dynaudio Hub or Connect. The Xeo 2's integrated high-performance digital amp takes over signal processing and drives the 28 mm tweeter and the 140 mm mid/bass driver in flawless harmonization. The reliably stable composite housing with solid aluminium baffle minimizes interference factors, so that the mind-blowingly pure sound can develop fully through the 2 x 65 watts of power. In addition to Bluetooth connectivity, the Xeo 2 features a high-res 24 bit/192 kHz optical digital input, one RCA stereo analog and one analog mini-jack connection. Wi-Fi connection is possible via the Dynaudio Connect, which also adds a USB and a coax digital input.



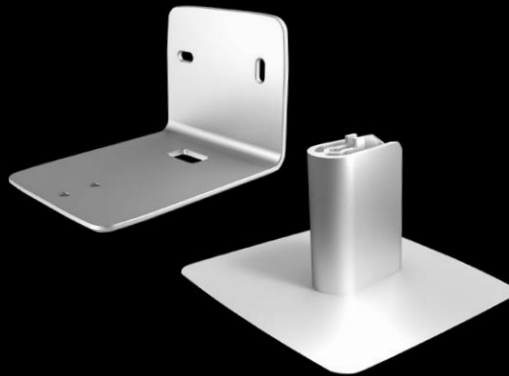
Customize your system

Accessories

The Xeo 2 is ideally suited for placement directly on a lowboard or sideboard, and such setups can be optimized via the new Xeo 2 Desk Stand.

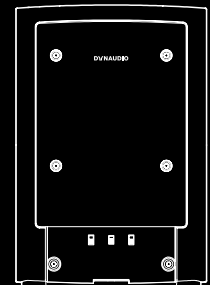
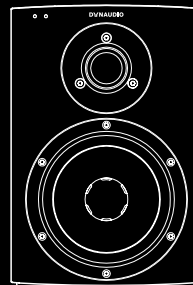
The Desk Stand boasts a rigid, low-resonance aluminium construction, and raises the Xeo 2 above the surface to enable optimum sound quality and performance from the loudspeaker. The internal cable channel allows the wires to disappear into the Desk Stand and below the integrated plinth.

Another option is the discreet and elegant wall-mounting of the Xeo 2. The dedicated Xeo 2 Wall Bracket allows one to directly mount the Xeo 2 almost flush to the wall, or alternatively to mount the Xeo 2 with some extra space to the wall, allowing one to angle the speaker 90 degrees to both sides. The Xeo 2 Wall Bracket is made of solid aluminium and provides a low-resonance, rigid and elegant base for the speaker.



Technical Specifications

| Technical Specifications | Xeo 2 |
|------------------------------|---|
| Frequency response (+/- 3dB) | 40 Hz – 24 kHz |
| Power consumption | 6 – 100 W |
| Power consumption standby | <0.5 W (network active) |
| Power rating | Woofer: 65 W, Tweeter: 65 W |
| Dimensions (W x H x D) | 173 x 255 x 154 mm (6.8 x 10.0 x 6.1 inch) |
| Weight | 4 kg |
| Power supply | 100 – 240 V, 50/60 Hz |
| Finishes | Satin White Satin Black |



Further information and technical data: www.dynaudio.com/xeo

Dynaudio A/S, 8660 Skanderborg, Denmark
www.dynaudio.com